

Modular design, flexible combination, Meeting the personalized needs of customers

**Product Features**



**Lifting Drive Unit**

The Lifting Drive Unit is a compact, highly efficient, smooth running, quiet unit specially designed for hoisting applications. End users will enjoy cost savings from the energy efficient motor and long-lasting components. Our DC Motor Brake has been designed for severe environment with up to one million cycles and asbestos free lining.



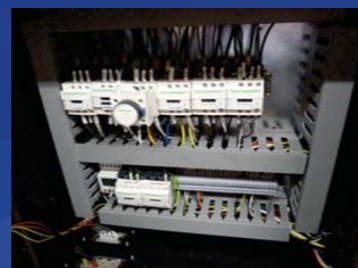
**Limit Switch**

Upper and Lower geared limit switch provides a safe and reliable lifting parameter for smooth operation and effective control.



**Lower Hook Block**

Dressor hook blocks have completed nondestructive testing at factory and meet DIN standards for quality and design. Our design features smooth running of sheaves and 360-degree rotation of hook, effective safety latch and protective side guard cheeks.



**Electrical Panel**

Compact design with over-designed CSA approved Schneider Contactor in lockable NEMA 4 enclosure. Our standard control voltage is 110 volts, with option 24 or 48 volt.

**“COMING SOON,  
Complete Crane Kits”**

For pricing and more information  
call toll free

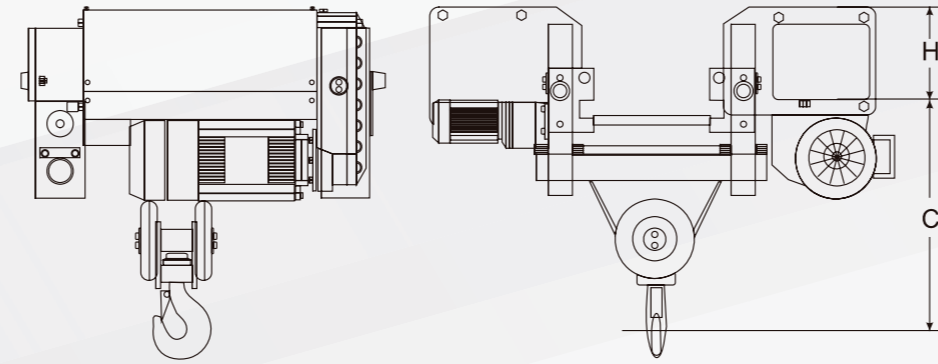
**(855) 636-9100**



**Dressor  
Wire Rope Hoists**

- 53 load capacity options
- Low-headroom European designed foot mounted, monorail hoists or double girder trolley hoists
- U-shape makes for compact dimensions
- Largely maintenance-free, low wear, service life
- Equipped as standard with two hoisting and travel speeds Particularly smooth starting and braking characteristics
- Standard high-quality safety components for increased safety and work

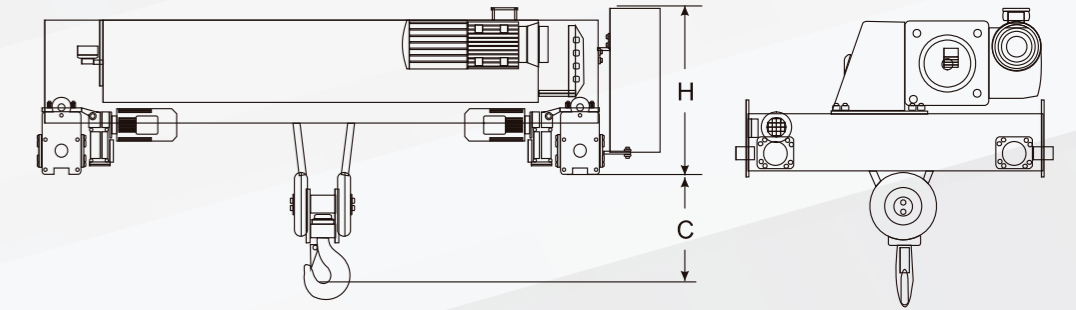
## Low Headroom Wire Rope Hoist



Technical Parameters of SINGLE GIRDER Wire Rope Hoist

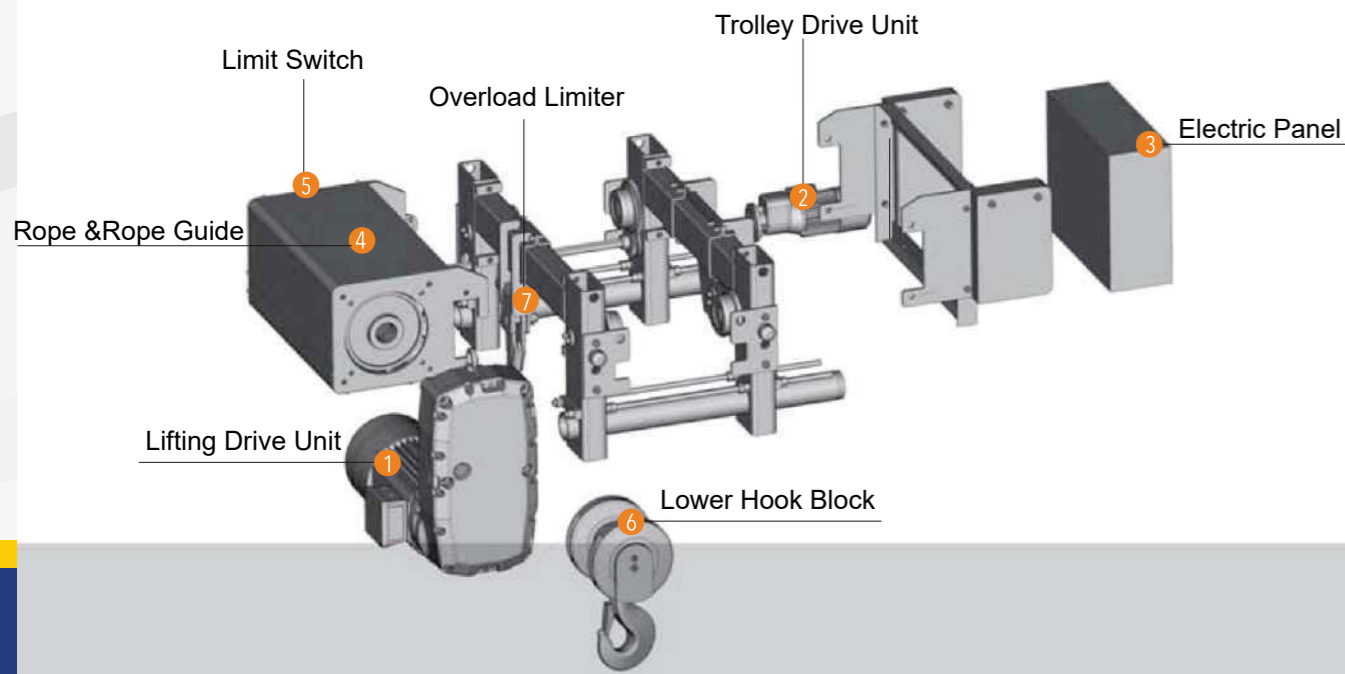
Load Capacity (Kg)	FEM	ISO	Height (m)	Speed (m/min)	Trolley Speed (m/min)	H Size (mm)	C Size (mm)
1000	4m	M7	6/9/12/18	0.8/5.0	5-20	245	385
1250	3m	M6	6/9/12/18	0.8/5.0	5-20	245	385
1600	3m	M6	6/9/12/18	0.8/5.0	5-20	245	385
1600	4m	M7	6/9/12/18	1.3/8.0	5-20	245	385
2000	2m	M5	6/9/12/18	0.8/5.0	5-20	245	385
2000	3m	M6	6/9/12/18	1.3/8.0	5-20	245	385
2500	3m	M6	6/9/12/18	0.8/5.0	5-20	245	385
2500	3m	M6	6/9/12/18	1.0/6.3	5-20	245	385
2500	2m	M5	6/9/12/18	1.3/8.0	5-20	245	385
3200	2m	M5	6/9/12/18	0.8/5.0	5-20	245	385
3200	2m	M5	6/9/12/18	1.0/6.3	5-20	245	385
5000	2m	M5	6/9/12/18	0.8/5.0	5-20	266	495
5000	2m	M5	6/9/12/18	1.6/10	5-20	296	792
5000	3m	M6	6/9/12/18	1.3/8.0	5-20	296	792
6300	1Am	M4	6/9/12/18	0.8/5.0	5-20	266	495
6300	1Am	M4	6/9/12/18	1.3/8.0	5-20	266	495
6300	2m	M5	6/9/12/18	1.3/8.0	5-20	266	495
6300	3m	M6	6/9/12/18	1.0/6.3	5-20	266	495
8000	1Am	M4	6/9/12/18	1.3/8.0	5-20	296	792
8000	3m	M6	6/9/12/18	0.8/5.0	5-20	296	792
10000	1Am	M4	6/9/12/18	1.0/6.3	5-20	296	792
10000	2m	M5	6/9/12/18	0.8/5.0	5-20	296	792
10000	3m	M6	6/9/12/18	0.66/4.0	5-20	296	792
12500	1Am	M4	6/9/12/18	0.8/5.0	5-20	296	792
12500	2m	M5	6/9/12/18	0.6/4.0	5-20	296	792
12500	2m	M5	6/9/12/18	0.6/4.0	5-20	296	792

## Double Girder Wire Rope Hoist



Technical Parameters of DOUBLE GIRDER Wire Rope Hoist

Load Capacity (Kg)	FEM	ISO	Height (m)	Speed (m/min)	Trolley Speed (m/min)	H Size (mm)	C Size (mm)
2000	2m	M5	6/9/12/18	0.8/5.0	5-20	230	350
3200	2m	M5	6/9/12/18	0.8/5.0	5-20	230	350
5000	2m	M5	6/9/12/18	0.8/5.0	5-20	230	350
5000	2m	M5	6/9/12/18	0.8/5.0	5-20	230	350
8000	3m	M6	6/9/12/18	0.8/5.0	5-20	540	360
10000	1Am	M4	6/9/12/18	1.0/6.3	5-20	540	360
10000	2m	M5	6/9/12/18	0.8/5.0	5-20	540	360
10000	3m	M6	6/9/12/18	0.66/4.0	5-20	540	360
12500	1Am	M4	6/9/12/18	0.8/5.0	5-20	540	420
12500	1Am	M4	6/9/12/18	1.0/6.3	5-20	540	420
12500	2m	M5	6/9/12/18	0.6/4.0	5-20	540	420
16000	2m	M5	6/9/12/18	0.66/4.0	5-20	640	480
20000	1Am	M4	6/9/12/18	0.66/4.0	5-20	640	480
20000	2m	M5	6/9/12/18	0.53/3.4	5-20	640	480
20000	3m	M6	6/9/12/18	1.0/4.2	5-20	790	620
25000	1Am	M4	6/9/12/18	0.53/3.4	5-20	790	620
25000	2m	M5	6/9/12/18	0.8/3.3	5-20	790	620
25000	2m	M5	6/9/12/18	1.0/4.2	5-20	790	620
32000	2m	M5	6/9/12/18	0.8/3.3	5-20	790	620
32000	2m	M5	6/9/12/18	0-4.9	5-20	895	980
40000	1Am	M4	6/9/12/18	0-4.9	5-20	895	980
50000	2m	M5	6/9/12/18	0-3.2	5-20	895	980
50000	1Am	M4	6/9/12/18	0-4.0	5-20	895	980
63000	1Am	M4	6/9/12/18	0-3.2	5-20	975	1100
63000	2m	M5	6/9/12/18	0-2.4	5-20	975	1100
80000	1Bm	M3	6/9/12/18	0-3.8	5-20	1025	1525
100000	1Bm	M3	6/9/12/18	0-2.1	5-20	1025	1525



### Trolley Drive Unit

Our trolley drive unit is compact, energy efficient and is equipped with a DC brake with Asbestos free Brake Disc capable of one million cycles. Brake is designed to stop a fully loaded hoist well within industry standards.



### Overload Limiter

Dressor Hoists are equipped with intelligent monitoring system that records running times, weight of loads lifted and overload occurrences. Also issues maintenance reminders and emits an alarm when brake disc needs to be changed.



### Rope & Rope Guide

Our high-performance wire rope is designed with a 5:1 safety factor and for longevity of life. The rope guide has been created to keep the wire rope constantly in its grooves. Always avoid side pulling with hoist and rope will last many hours of continuous use.